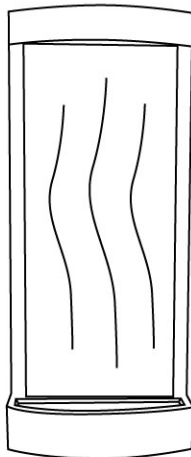




**FIREPLACES & GRILLS**

*Award Winning Products*

## **60" Waterfall Instructions for use**



### **WF10 Series**

#### **Warning :**

- 1) This manual is suitable for all the waterfall with glass panel
- 2) This waterfall must be wall mounted. Even if the reservoir is to rest on the floor, the waterfall must be placed against a wall. The supplied wall mount bracket must be used to support the unit and prevent tipping.

#### **Avertissement :**

Cette cascade d'eau doit être fixée au mur. Même si le réservoir est situé au niveau du plancher, la cascade d'eau doit être placée contre un mur. Le support de fixation fourni doit être utilisé pour soutenir l'unité et l'empêcher de basculer.

**Inspection for Shipping damage—any damage from shipping should immediately be reported to Napoleon Customer Service or the store that it was purchased from. Do not attempt to operate if the unit is damaged.**

#### **Parts list**

Light/bracket with transformer(1) bag of river rocks (1)  
Pump assembly (1) metal trays for rocks (1) for center mount  
Cable clips (1)

#### **Tools Required**

Level  
Pencil  
Phillips head screwdriver

## Wall mount instructions

1. The wall bracket has been pre-mounted on the back of waterfall. Simply unscrew the wall bracket with a screwdriver as shown in "Figure A" before assembly.
2. Determine the desired location on the wall;(The wall mounting bracket can be mounted without stud, if you encounter a stud while mounting wall bracket,use the provided mounting wood screw, use easy anchors for the holes without studs, each easy anchor holds up to 50 lbs)
3. Hold the mounting bar to the wall(The top of mounting bar should angle away from the wall and the holes should aim toward the wall).  
Mark the centre hole on the wall. (See Figure B)

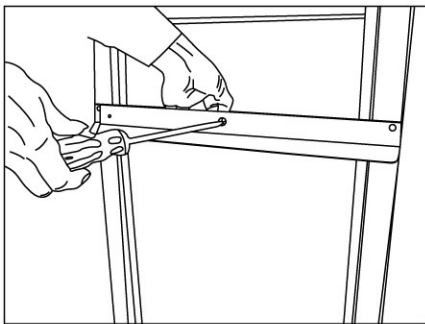


Figure A

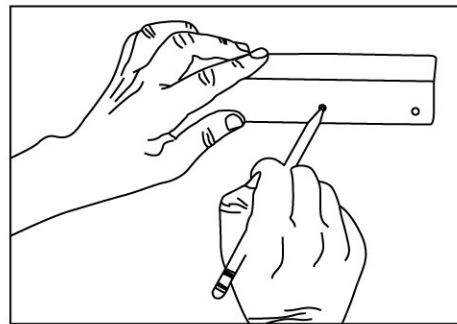


Figure B

4. To install the easy anchor, gently tap the tip into the drywall, and slowly screw the anchor the rest of the way. Be careful not to over tighten, as shown in Figure C

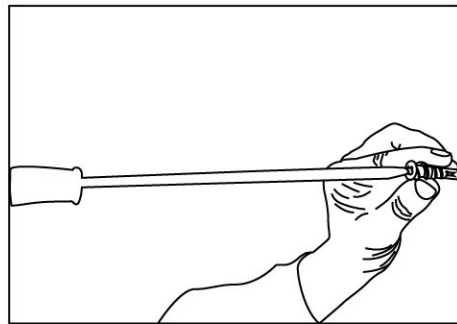


Figure C

5. Mount the wall bracket with the centre screw into the easy anchor from step 3
6. Level the mounting bracket and mark holes at the side; See Figure D;

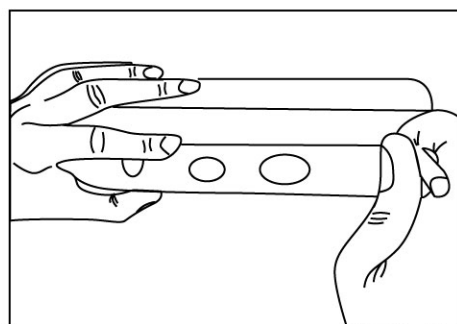


Figure D

7. Turn the bracket 90 degrees, install side anchors. Figure E.

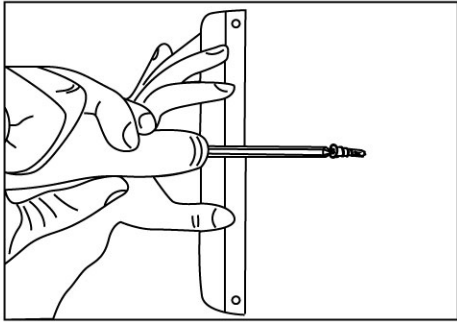


Figure E

8. Turn the bracket back to level and install screws, tighten all 3 screws. See Figure F;

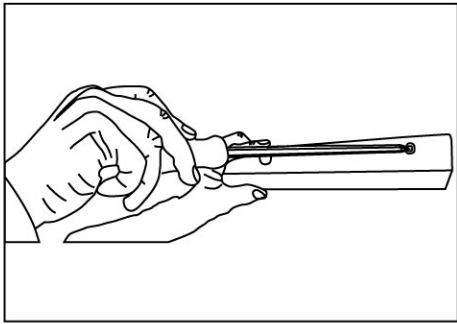


Figure F

9. Lift unit into place and engage brackets by lowering the fountain onto the wall bracket. See Figure G.

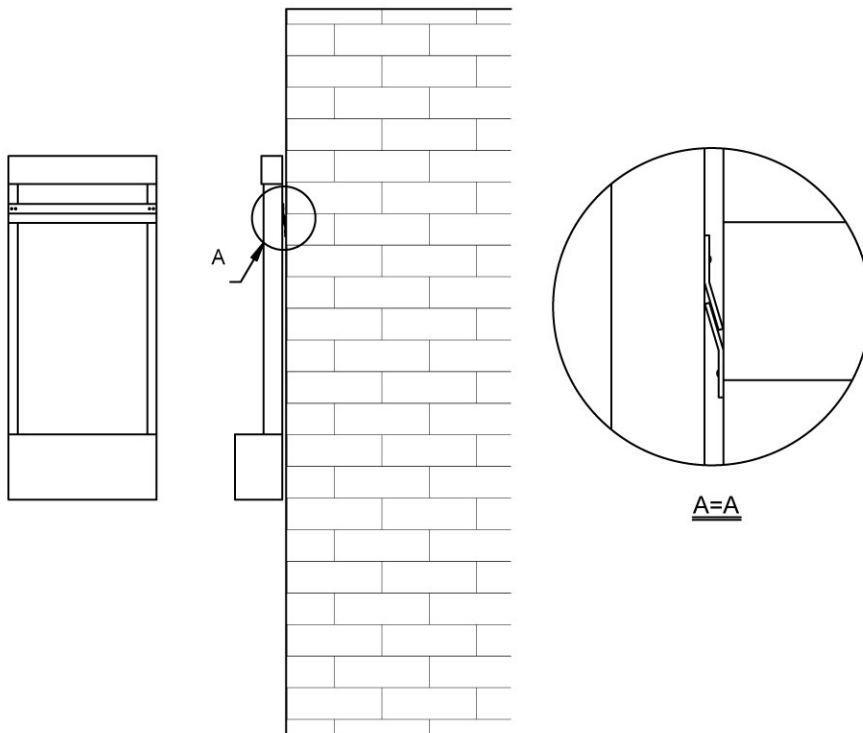


Figure G

10. Put the wall mount unit on the wall and fill reservoir with water;
11. Put the river rocks on the rock tray and plug in power. Enjoy your waterfall.

**Remark:**

1. When opening the box, clean the reservoir completely, make sure there's no dirty ingredients or impurity in the reservoir, otherwise the dirty ingredients or impurity will affect the water flow.
2. Make sure to clean the glass with Scotch scrubber if the water flow is not smooth; use "glass detergent" to clean the glass surface; then change to clean water in the reservoir.
3. The pump works best in the clean water, change the water monthly to avoid any algae build-up; The manifold (spray bar) must be cleaned periodically. Remove the header and adjust the angle of manifold then unscrew it and remove from unit. Clean each hole in the manifold. After cleaning, screw the manifold to the 90 degree elbow until the green arrow aligns with the arrow on the elbow.

Note: If you have any questions or experience any problems with the Waterfall or water pump that you've just purchased, please contact Napoleon Customer Care

You can reach us at the following telephone number or by email at:

NAPOLEON APPLIANCE CORPORATION  
214 BAYVIEW DRIVE, BARRIE, ONTARIO, L4N 4Y8

PHONE : 705-726-4278 TOLL FREE:1-866-820-8686

FAX : +1 705-725-2564

EMAIL: [care@nac.on.ca](mailto:care@nac.on.ca)

WEB: [www.napoleongrills.com](http://www.napoleongrills.com)